

# Clay Born Textiles

AVAILABLE IN 6 PATTERNS

DETAILED VIEWS OF INDIVIDUAL PRODUCTS AT [CLAYBORNPOTTERY.COM/TEXTILES](http://CLAYBORNPOTTERY.COM/TEXTILES)



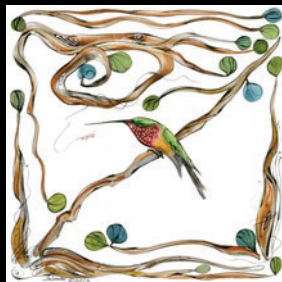
CRAB



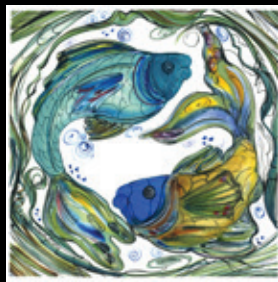
DRAGONFLY



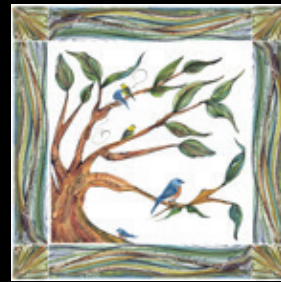
HERON



HUMMING BIRD



FISH



TREE WITH BIRDS

## RETAIL PRICING

(DOES NOT INCLUDE SHIPPING)

|      |                         |     |      |  |     |
|------|-------------------------|-----|------|--|-----|
| 16-3 | Tea Towel               | 22  | 17-3 | Throw Pillows                            |     |
| 16-4 | Chefs Apron - Black     | 45  |      | 14" x 14" with polyfil insert            | 60  |
| 16-5 | Chefs Apron - White     | 25  |      | 14" x 14" without insert                 | 50  |
| 16-6 | Reversible Table Runner | 100 |      | 20" x 20" with down insert               | 165 |
| 16-7 | Napkins / Individual    | 15  |      | 20" x 20" without insert                 | 150 |
|      | Napkins / Set of 4      | 50  | 17-4 | Notecards - Box of 12 - 2 of each design | 16  |

WHOLESALE TEXTILE INQUIRIES WELCOME

NANCY RASCH SALAMON ~ CLAY BORN TEXTILES

349 West Barnard Street  
West Chester, PA 19382

STUDIO 610-431-7420  
FAX 610-436-5003